



W. B. Donner pinx.

A. Folin fecit.

Sylvius Leopold Weiss.
Geboren in Breslau den 12. Octobr. 1686.
Gestorben in Dresden den 15. Octobr. 1750.
Es soll nur Sylvius die Laute spielen.

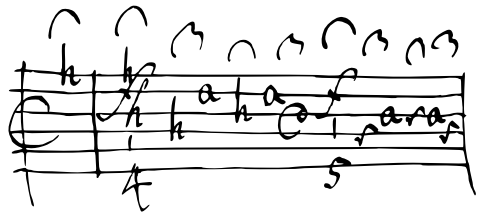
v. Koenig.

Sylvius Leopold Weiss

Suite de pièces pour luth seul

1730-1765

Suite en ré majeur
WeissSW 40.1-6



P. S. A. S. M. L. V. de Lobkowitz
N. 12.
Januaris.

Entrée Spiritoso.

A handwritten musical score for a piece titled "Entrée Spiritoso". The score is written on ten staves, each containing a single melodic line. The notation is dense and expressive, featuring a variety of rhythmic values including eighth, sixteenth, and thirty-second notes, as well as rests and slurs. The key signature is one flat (B-flat), and the time signature is 4/4. The music begins with a treble clef and a key signature change to one flat. The notation includes many slurs, ties, and dynamic markings such as *f* (forte) and *ff* (fortissimo). The piece concludes with a double bar line and a final flourish. The handwriting is fluid and characteristic of a composer's sketch.